

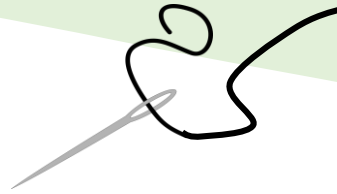
10,000 BCE

Neolithic Revolution: humans first begin to grow crops and settle into communities.



100 CE

One of the first medicinal uses of a biodegradable polymer was for medical stitches and were made from the intestines of sheep.



1735 CE

Although people have been organizing the things they see into groups since the beginning of time, Carl Linnaeus of Sweden develops the system we use today with Kingdom, class, order, genus, species.

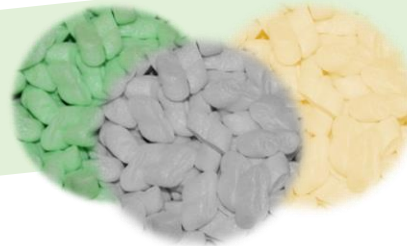


Cat = *Felis catus*
Dog = *Canis lupus familiaris*



1839 CE

Polystyrene is invented in Germany by Eduard Simon.



1980 CE

The concept of synthetic biodegradable plastics and polymers is first introduced.



1988 CE

Berkeley, California becomes the first city to ban polystyrene because of its harmful impact on the environment.



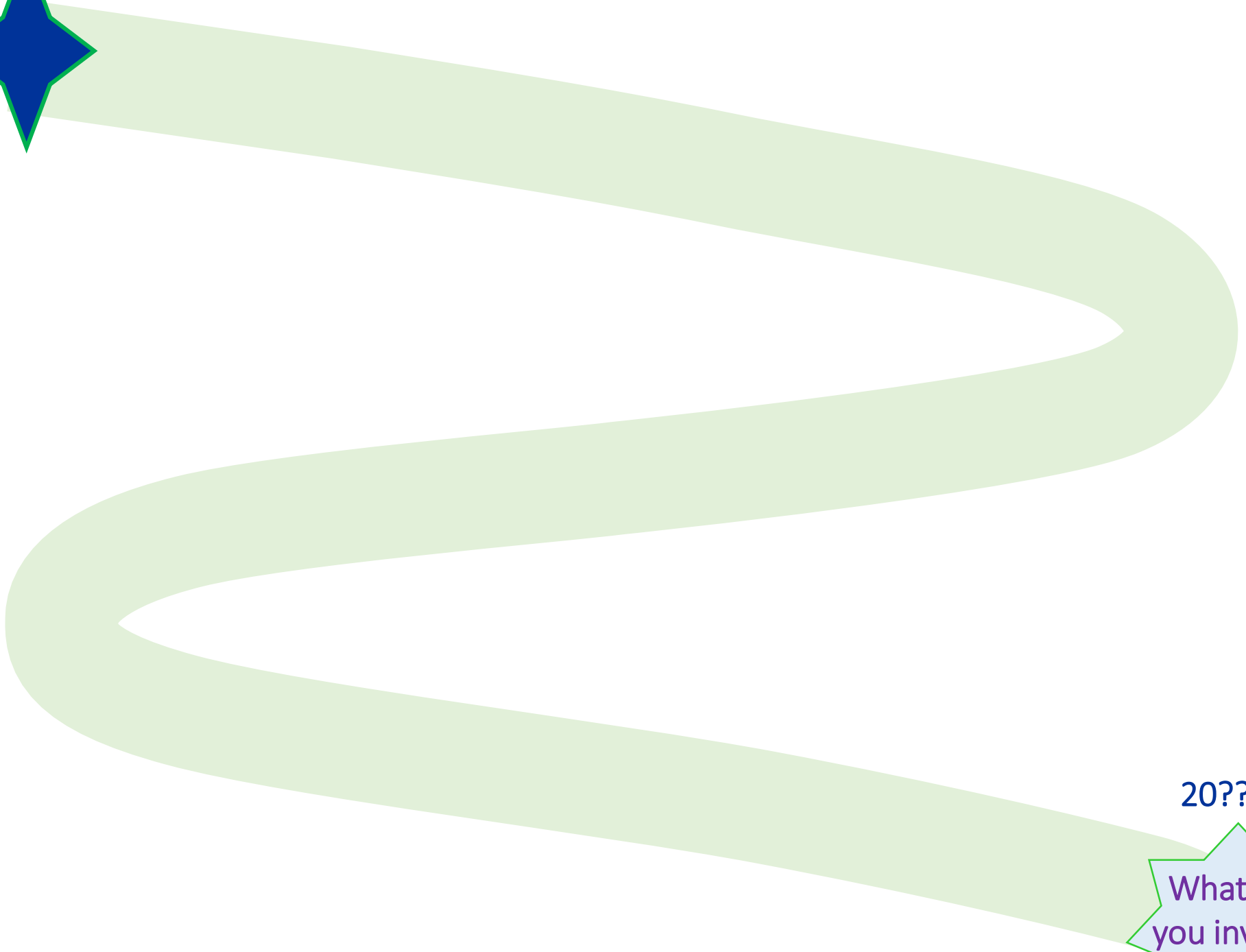
2013 CE

Boyan Slat, age 17, founds the Ocean Cleanup project to try to clean up all the plastic waste in the ocean.

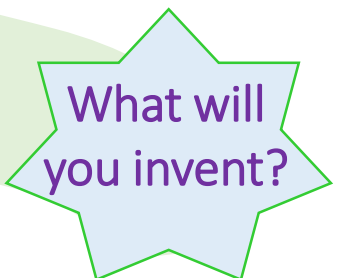


20?? CE

What will you invent?



20?? CE

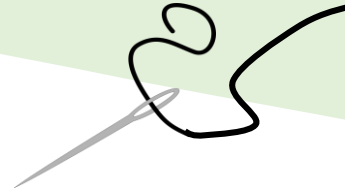
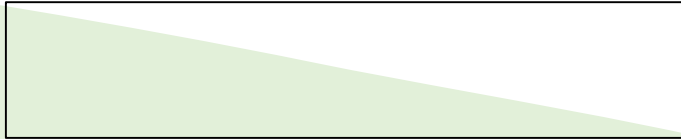


What will
you invent?

10,000 BCE



100 CE



1735 CE



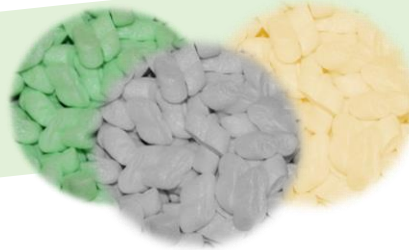
1839 CE



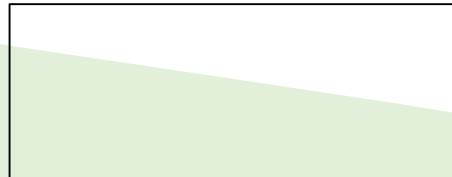
Cat = *Felis catus*
Dog = *Canis lupus familiaris*



1980 CE



1988 CE



2013 CE



20?? CE



What will you invent?

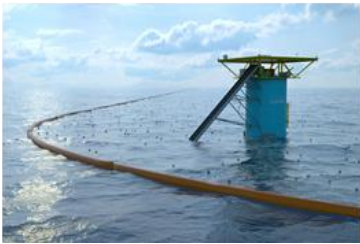
The concept of synthetic biodegradable plastics and polymers is first introduced.



Berkeley, California becomes the first city to ban polystyrene because of its harmful impact on the environment.



Boyan Slat, age 17, founds the Ocean Cleanup project to try to clean up all the plastic waste in the ocean.



Although people have been organizing the things they see into groups since the beginning of time, Carl Linnaeus of Sweden develops the system we use today with Kingdom, class, order, genus, species.



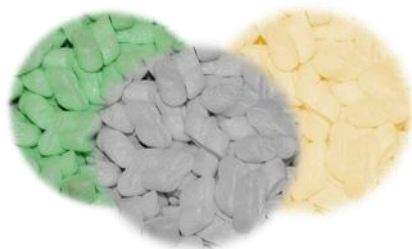
Cat = *Felis catus*
Dog = *Canis lupus familiaris*



One of the first medicinal uses of a biodegradable polymer was for medical stitches and were made from the intestines of sheep.



Polystyrene is invented in Germany by Eduard Simon.



Neolithic Revolution: humans first begin to grow crops and settle into communities.

